



E & A CONSULTING GROUP, INC.

Engineering Answers

10909 Mill Valley Road, Suite 100 • Omaha, NE 68154-3950

P 402.895.4700 • F 402.895.3599

www.eacg.com

Dear Homeowner:

The SID has contracted concrete work to be done on the streets in your SID. A contractor will be on site to do work which includes removing the existing concrete that is damaged and replacing it with new pavement.

Throughout the course of this project, there could be some minimal damage done to yards and or sprinkler systems. The contractor that is on site will be responsible for replacing any damaged sprinkler lines and/or heads. They will also be replacing any sod that is torn up while on site. Once the new sod is laid, it will be the responsibility of the homeowner at each lot to water the new sod until it has re-established itself.

Before starting the work on site, each contractor must put in a call and have all the utilities in the area located. You might notice some areas in your yard that have been flagged and/or spray painted. This does not indicate the area in which they will be working. It is just to give them an idea of what kind of utilities are in the area that could possibly be hit while the contractor is on site working.

All work that is completed in public Right-of-Way and follow City of Omaha and Sarpy County specifications.

The work in your SID should not take longer than 30 days to complete. Please let me know if you have any questions or concerns on this at all.

Thank You,

A handwritten signature in black ink, appearing to read 'Nelson C Flores', written over a horizontal line.

Nelson C Flores

Construction Administration Tech.

Engineering Answers...by assisting our clients

E & A Consulting Group, Inc.

10909 Mill Valley Road, Suite 100 • Omaha, NE 68154

402.895.4700 (o)

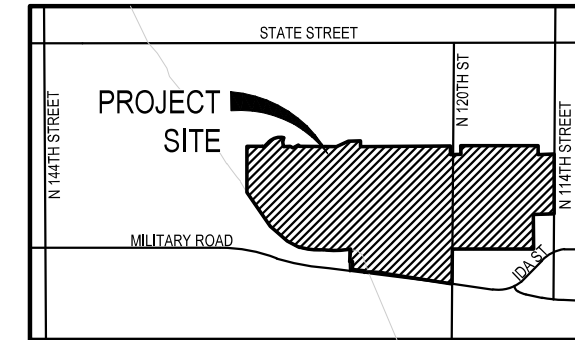
eacg.com



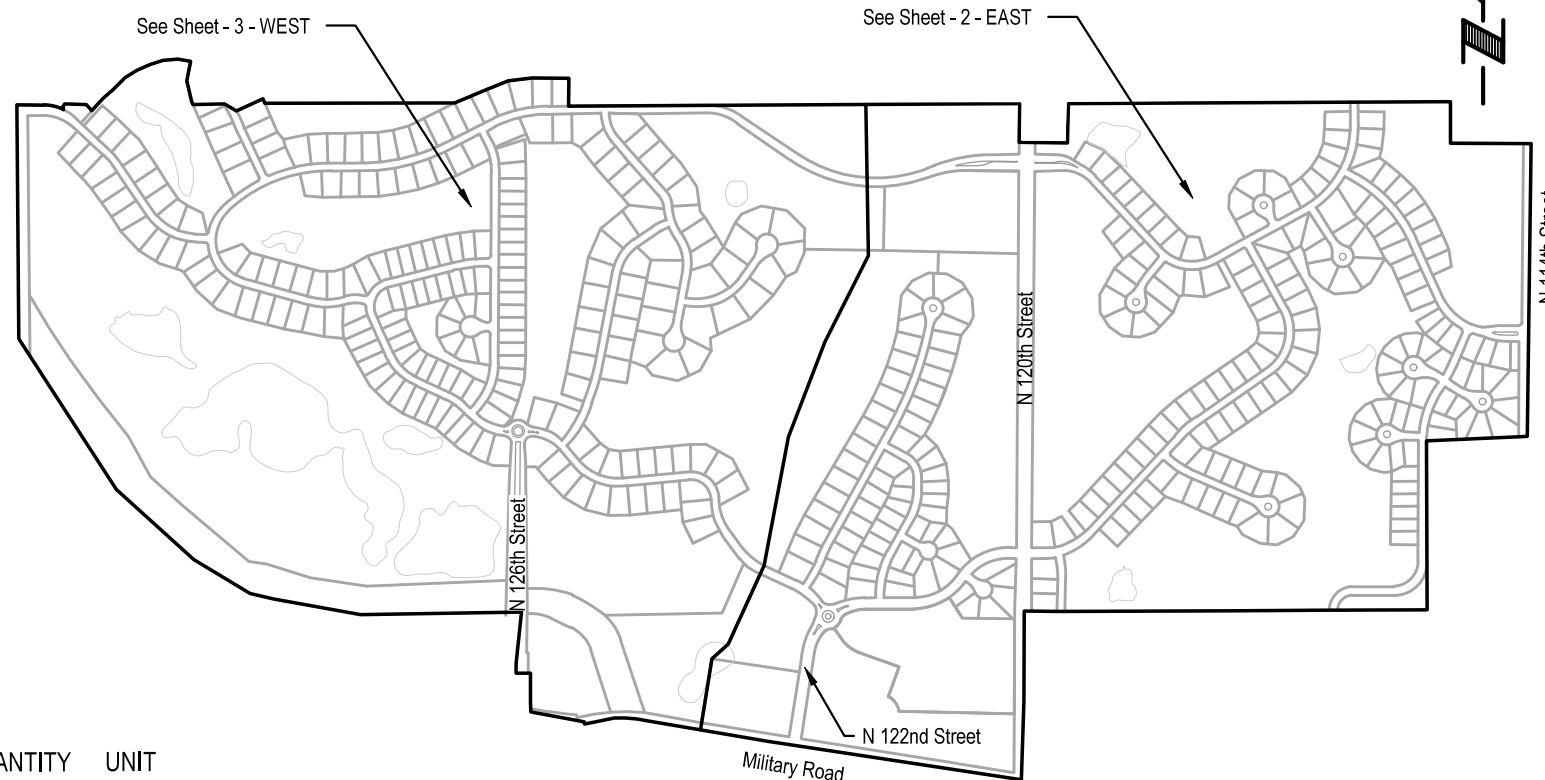
DEER CREEK

2024 STREET RECONSTRUCTION

SID NO. 405
DOUGLAS COUNTY, NEBRASKA



VICINITY MAP



INDEX OF SHEETS

SHEET NO.	DESCRIPTION
1	COVER
2	EAST
3	WEST
4	TOTAL QUANTITIES
5	COMPOSITE MAP



APPROXIMATE BID QUANTITIES

ITEM	DESCRIPTION	QUANTITY	UNIT
1	CONCRETE PAVEMENT REPAIR, LARGE AREA	1,103	SY
2	CONCRETE PAVEMENT REPAIR, SMALL AREA	759	SY
3	FULL DEPTH SAW CUT EXISTING PAVEMENT	2,294	LF
4	ADJUST MANHOLE TO GRADE	1	EA
5	REMOVE AND REPLACE PCC SIDEWALK	424	SF
6	REMOVE AND REPLACE PCC CURB RAMP	45	SF
7	CONSTRUCT DETECTABLE WARNING PANEL (1 location)	8	SF
8	REMOVE AND REPLACE FAULTY SUBGRADE	25	TN
9	ADJUST SPRINKLER (AS NEEDED)	1	EA

APPLICANT

SID # 405
Ed Fuxa, Chairman
11440 West Center Road, Ste. C
Omaha, NE 68114
P: 402.334.0700
F: 402.334.0815
larry@fdjlaw.com

DESIGNER

E & A Consulting Group, Inc
Teresa Wooten, P.E.
10909 Mill Valley Road, Suite 100
Omaha, NE 68154
P: 402.895.4700
F: 402.895.3599
twooten@eacg.com

INSPECTOR

E & A Consulting Group, Inc
Randall L. Pierce, P.E.
10909 Mill Valley Road, Suite 100
Omaha, NE 68154
P: 402.895.4700
F: 402.895.3599
rpierce@eacg.com

CONTRACTOR

E & A CONSULTING GROUP, INC.
Engineering • Planning • Environmental & Field Services

10909 Mill Valley Road, Suite 100 • Omaha, NE 68154
Phone: 402.895.4700 • Fax: 402.895.3599
www.eacg.com
State of NE Certificate of Authorization #C40008

**DEER CREEK
2024 STREET
RECONSTRUCTION**
SID 405
DOUGLAS COUNTY, NEBRASKA

COVER

Proj No: P20082754018

Date: 09/07/2024

Designed By: TAM

Drawn By: JME

Scale: 1" = 100'

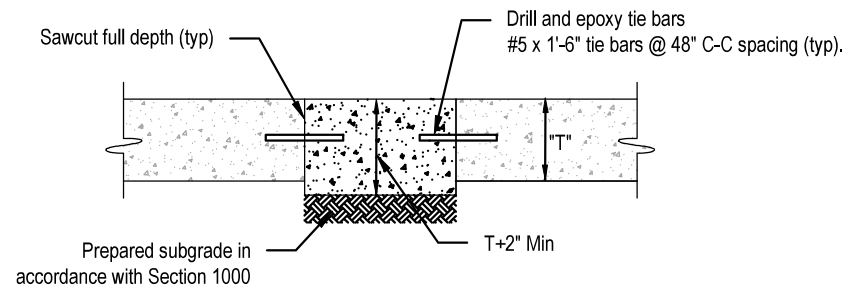
Sheet: 1 of 5

Revisions

Date	Description

LEGEND

— Golf Cart Path



SMALL AREA CONCRETE PAVEMENT REPAIR DETAIL
 NOT TO SCALE

2024 STREET RECONSTRUCTION

AREA NO.	NO. POURS	SAW CUT L.F.	CURB L.F.	WIDTH	X	LENGTH	LARGE AREA EST S.Y.	SMALL AREA EST S.Y.	NOTES
1	1	40	10	10.0	x	10.0		11.1	
2	2	50	60	25.0	x	30.0	83.3		
3	1	71	45	12.8	x	45.0	63.8		
4	2	130		15.0	x	25.0		41.7	
5	1	25		12.5	x	12.5		17.4	
6	1	55	30	12.5	x	30.0		41.7	
7	1	100	75	12.5	x	75.0	104.2		
8	1	70	45	12.5	x	45.0	62.5		
9	1	55	30	12.5	x	30.0		41.7	
10	2	20	50	30.0	x	50.0	166.7		
11	1	30	10	10.0	x	10.0		11.1	
12	1	44	20	11.0	x	20.0		24.4	
13	2	80	45	12.5	x	15.0	20.8		
				15.0	x	25.0	41.7		
14	1	40	15	12.5	x	15.0		20.8	
15	1	45	20	12.5	x	20.0		27.8	
16	1	70	45	12.5	x	45.0	62.5		
17	1	20		10.0	x	5.0		5.6	
18	1	40	15	12.5	x	15.0		20.8	
19	1	40	15	12.5	x	15.0		20.8	
20	1	85	60	12.5	x	60.0	83.3		
21	1	40	15	12.5	x	15.0		20.8	
22	1	85	50	17.0	x	50.0	94.4		Curb Inlet Throat

2024 STREET RECONSTRUCTION

AREA NO.	TYPE	APPROX. DIMEN.		EST S.F.	NOTES
A	Curb Ramp	5.5	x 8.3	45.4	ADA Plate - Cast Iron
B	Sidewalk	8.0	x 17.0	136.0	
C	Sidewalk	4.0	x 72.0	288.0	

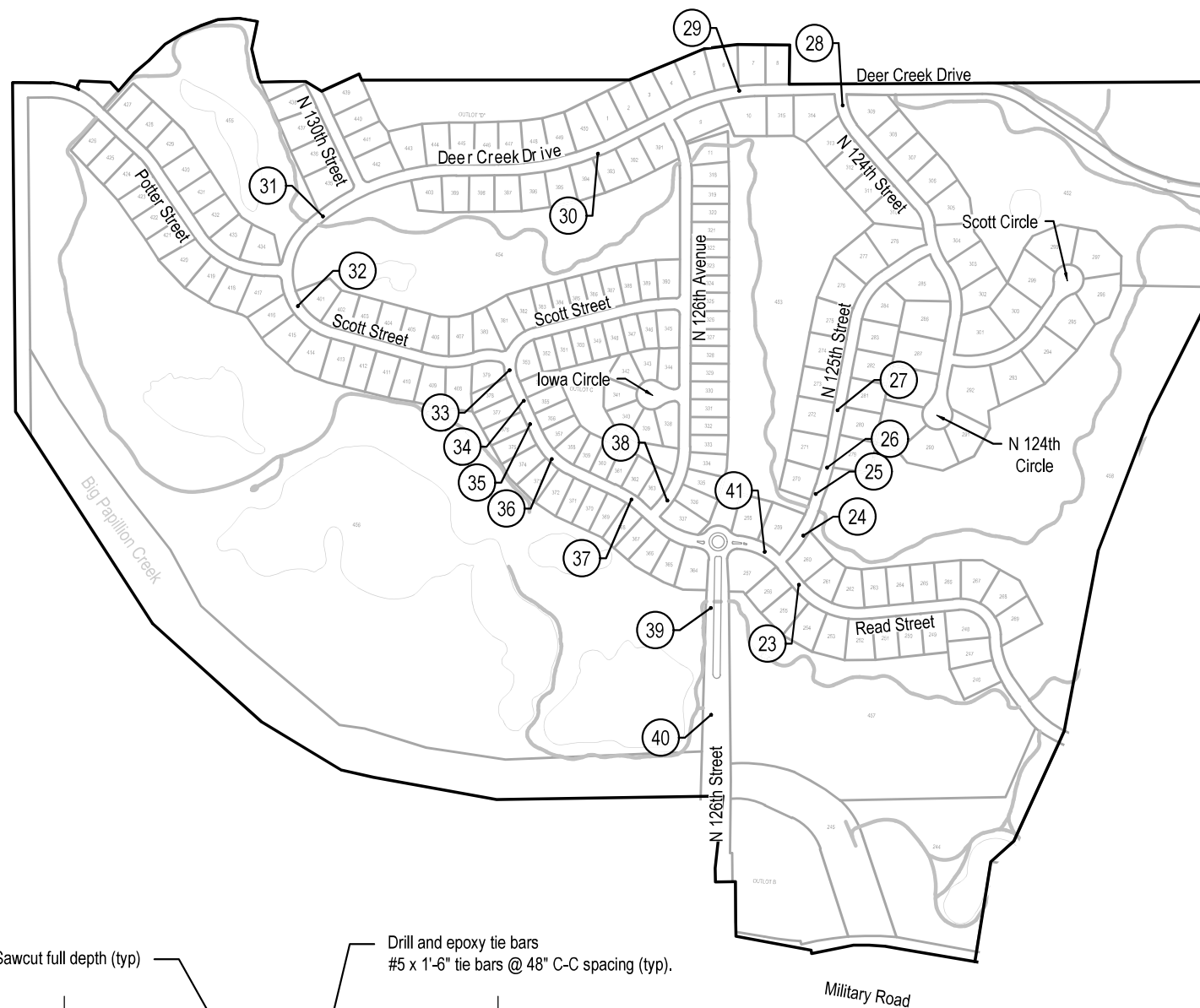


Revisions	Date	Description
1	03/07/2024	

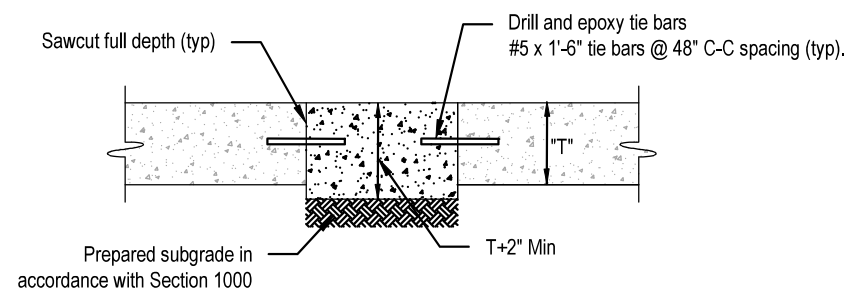
Proj No: P20082754018
 Date: 03/07/2024
 Designed By: TAM
 Drawn By: JMB
 Scale: 1" = 80'
 Sheet: 2 of 4

LEGEND

— Golf Cart Path



2024 STREET RECONSTRUCTION									
AREA NO.	NO. POURS	SAW CUT L.F.	CURB L.F.	WIDTH	X	LENGTH	LARGE AREA EST S.Y.	SMALL AREA EST S.Y.	NOTES
23	1	85		12.5	x	30.0		41.7	
24	1	55	30	12.5	x	30.0		41.7	
25	2	80	45	12.5	x	15.0	20.8		
				15.0	x	25.0	41.7		
26	1	70	45	12.5	x	45.0	62.5		
27	1	55	30	12.5	x	30.0		41.7	
28	1	40	12	12.5	x	12.0		16.7	
29	1	40	15	12.5	x	15.0		20.8	
30	1	40	15	12.5	x	15.0		20.8	
31	2	105	90	12.5	x	60.0	83.3		Adjust Manhole
				12.5	x	30.0	41.7		
32	1	40	15	12.5	x	15.0		20.8	
33	1	40	15	12.5	x	15.0		20.8	
34	1	55	30	12.5	x	30.0		41.7	
35	1	55	30	12.5	x	30.0		41.7	
36	1	55	30	12.5	x	30.0		41.7	
37	1	26	20	3.0	x	20.0		6.7	Curb Inlet Throat
38	1	55	30	12.5	x	30.0		41.7	
39	1	33	11	11.0	x	11.0		13.4	
40	2	75	25	25.0	x	25.0	69.4		
41	1	55	30	12.5	x	30.0		41.7	



SMALL AREA CONCRETE PAVEMENT REPAIR DETAIL
 NOT TO SCALE



E & A CONSULTING GROUP, INC.
 Engineering • Planning • Environmental & Field Services
 10809 Mill Valley Road, Suite 100 • Omaha, NE 68154
 Phone: 402.295.4700 • Fax: 402.295.2599
 www.eandagroup.com
 State of NE Certificate of Authorization #C40008

E & A CONSULTING GROUP, INC.
 Engineering Answers

DEER CREEK 2024 STREET RECONSTRUCTION
 SID 405
 DOUGLAS COUNTY, NEBRASKA

WEST

Revisions: [Table with 2 columns: Date, Description]
 Date: 03/07/2024
 Designed By: TMM
 Drawn By: JMB
 Scale: 1" = 80'
 Sheet: 3 of 6



2024 STREET RECONSTRUCTION									
AREA NO.	NO. POURS	SAW CUT L.F.	CURB L.F.	WIDTH	X	LENGTH	LARGE AREA EST S.Y.	SMALL AREA EST S.Y	NOTES
1	1	40	10	10.0	x	10.0		11.1	
2	2	50	60	25.0	x	30.0	83.3		
3	1	71	45	12.8	x	45.0	63.8		
4	2	130		15.0	x	25.0		41.7	
5	1	25		12.5	x	12.5		17.4	
6	1	55	30	12.5	x	30.0		41.7	
7	1	100	75	12.5	x	75.0	104.2		
8	1	70	45	12.5	x	45.0	62.5		
9	1	55	30	12.5	x	30.0		41.7	
10	2	20	50	30.0	x	50.0	166.7		
11	1	30	10	10.0	x	10.0		11.1	
12	1	44	20	11.0	x	20.0		24.4	
13	2	80	45	12.5	x	15.0	20.8		
				15.0	x	25.0	41.7		
14	1	40	15	12.5	x	15.0		20.8	
15	1	45	20	12.5	x	20.0		27.8	
16	1	70	45	12.5	x	45.0	62.5		
17	1	20		10.0	x	5.0		5.6	
18	1	40	15	12.5	x	15.0		20.8	
19	1	40	15	12.5	x	15.0		20.8	
20	1	85	60	12.5	x	60.0	83.3		
21	1	40	15	12.5	x	15.0		20.8	
22	1	85	50	17.0	x	50.0	94.4		Curb Inlet Throat
23	1	85		12.5	x	30.0		41.7	
24	1	55	30	12.5	x	30.0		41.7	
25	2	80	45	12.5	x	15.0	20.8		
				15.0	x	25.0	41.7		
26	1	70	45	12.5	x	45.0	62.5		
27	1	55	30	12.5	x	30.0		41.7	
28	1	40	12	12.5	x	12.0		16.7	
29	1	40	15	12.5	x	15.0		20.8	
30	1	40	15	12.5	x	15.0		20.8	
31	2	105	90	12.5	x	60.0	83.3		Adjust Manhole
				12.5	x	30.0	41.7		
32	1	40	15	12.5	x	15.0		20.8	
33	1	40	15	12.5	x	15.0		20.8	
34	1	55	30	12.5	x	30.0		41.7	

2024 STREET RECONSTRUCTION									
AREA NO.	NO. POURS	SAW CUT L.F.	CURB L.F.	WIDTH	X	LENGTH	LARGE AREA EST S.Y.	SMALL AREA EST S.Y	NOTES
35	1	55	30	12.5	x	30.0		41.7	
36	1	55	30	12.5	x	30.0		41.7	
37	1	26	20	3.0	x	20.0		6.7	Curb Inlet Throat
38	1	55	30	12.5	x	30.0		41.7	
39	1	33	11	11.0	x	11.0		13.4	
40	2	75	25	25.0	x	25.0	69.4		
41	1	55	30	12.5	x	30.0		41.7	

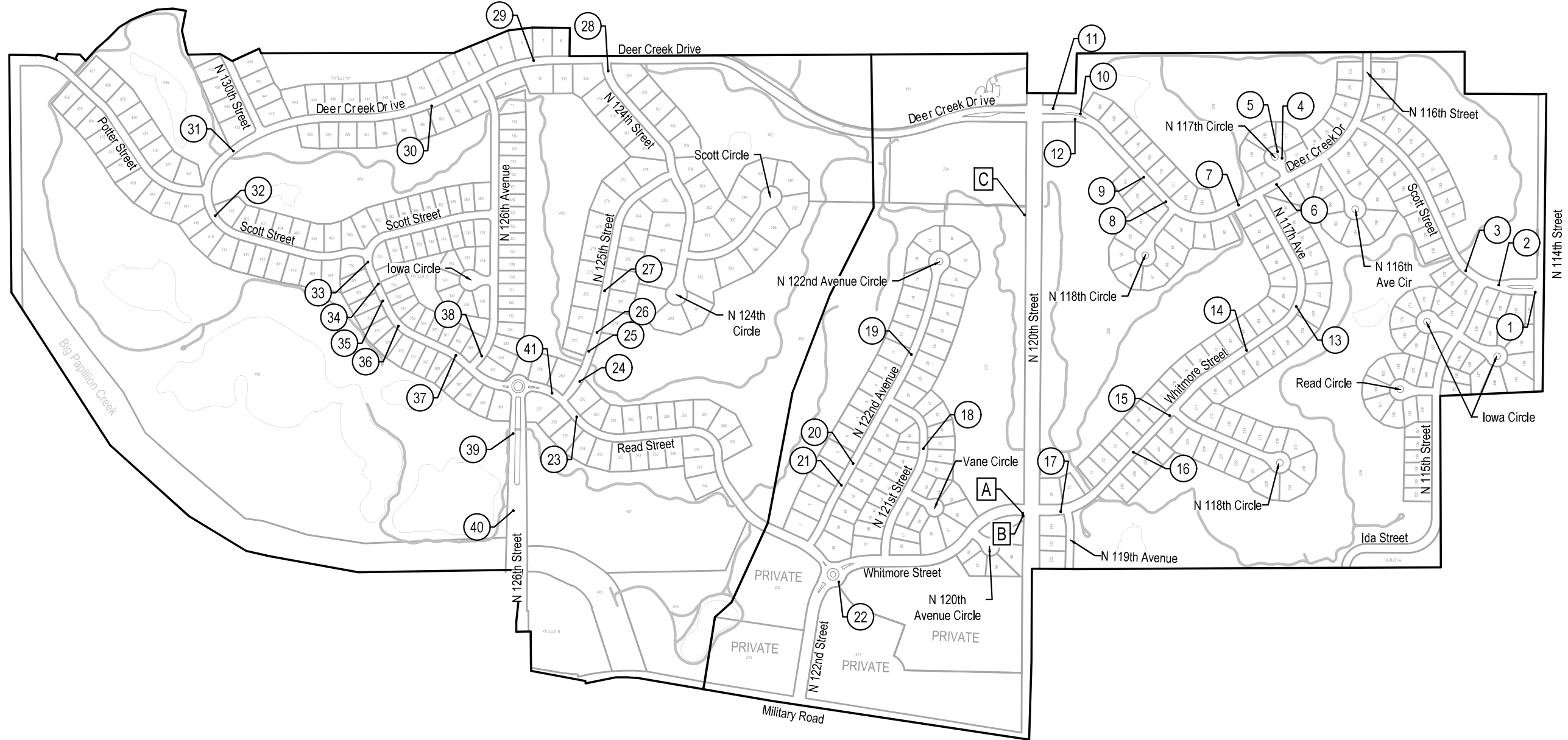
2024 STREET RECONSTRUCTION						
AREA NO.	TYPE	APPROX. DIMEN.			EST S.F.	NOTES
A	Curb Ramp	5.5	x	8.3	45.4	ADA Plate - Cast Iron
B	Sidewalk	8.0	x	17.0	136.0	
C	Sidewalk	4.0	x	72.0	288.0	



DEER CREEK 2024 STREET RECONSTRUCTION SID 405 DOUGLAS COUNTY, NEBRASKA	E & A CONSULTING GROUP, INC. Engineering • Planning • Environmental & Field Services 10809 Mill Valley Road, Suite 100 • Omaha, NE 68154 Phone: 402.255.4700 • Fax: 402.955.2599 www.eandagroup.com State of NE Certificate of Authorization #C40008	TOTAL QUANTITIES	3/7/2024 3:39 PM K:\Projects\2008\276\p16\Engineering\CAD Files\Paving\Deer Creek 2024 Street Reconstruction-000.dwg Jessica Brown
Proj No: P2008276-018 Date: 03/07/2024 Designed By: TAMM Drawn By: JMB Scale: N/A Sheet: 4 of 5	Revisions Date Description		

LEGEND

— Golf Cart Path



Revisions	Date	Description
1	03/07/2024	Final

Proj No: P2008275018
 Date: 03/07/2024
 Designed By: TAM
 Drawn By: JMB
 Scale: 1" = 80'
 Sheet: 5 of 5

DEER CREEK
 2024 STREET
 RECONSTRUCTION
 SID 405
 DOUGLAS COUNTY, NEBRASKA



E & A CONSULTING GROUP, INC.
 Engineering • Planning • Environmental & Field Services
 10809 Mill Valley Road, Suite 100 • Omaha, NE 68154
 Phone: 402.255.4700 • Fax: 402.255.3599
 www.eandagroup.com
 State of NE Certificate of Authorization #C40008